

# TORONTO YOUTH EQUITY STRATEGY

The **Toronto Youth Equity Strategy** was developed through deep consultation with Toronto Youth, adopted by city council in **2014**. It identifies **28 key issues** faced by youth most vulnerable to involvement in violence and crime that the City and its partners must address.



## ABOUT US

Almost 55 years ago, George Fernie recognized a community need to provide disenfranchised youth with essential needs and give them opportunities to succeed. Rather than justifying every reason to ignore the issues, he chose to do something. Mr. Fernie decided that he was going to care. His efforts have helped hundreds of youth gain access to food, shelter and given them opportunities to become franchised members of their communities.

## Caring Beyond Reason®

Caring beyond reason is at the heart of all our community programs for youth, their families, and their support team. While nurturing hope, and self-esteem and a spiritual journey, we support youth with the relationships, knowledge, and abilities needed to help them lead an upstanding, value-driven life becoming contributing members of our community.

## REFERRAL PROCESS

We accept referrals from the Probation and Parole Officers of the Toronto Anti Guns and Gangs Unit (TAGGU) and other Toronto Youth Equity Strategy Programs.

To make a referral or ask a question please contact our TYESS-SS Case Managers directly:

<b>Destiny Guthrie</b> (416) 984-4606 dguthrie@fernienyouth.ca East Office	<b>Femi Lawson</b> (416) 984-4050 flawson@fernienyouth.ca West Office
---	--

# CONNECT

[www.fernienyouth.ca](http://www.fernienyouth.ca)

f @fernienyouth   i @fernieceares   t @fernienyouth



437 Port Union Road  
Toronto, Ontario. M1C 2L6.  
**(416) 284-3711**



## TORONTO YOUTH EQUITY STRATEGY - SUPPORT SERVICES -

# TYESS

COMMUNITY-BASED  
CASE MANAGEMENT SUPPORT  
FOR YOUNG ADULTS AGED 18-29

Caring Beyond Reason®

## HOW IT WORKS

The Fernie TYES Case Manager will encourage and support participants to develop the appropriate skills to address and manage the effects of trauma and violence, and working productively towards their goals.

The Fernie Case Manager will work with participants, along with their Probation/Parole Officer and others from the participant's support team to complete a Needs Assessment and Service Plan. Service Plans will identify goals and targets that may include: living in a stable environment, improving relationships with family and positive friends, engaging in school and/or employment, participating in recreational activities, improving physical and mental health, addressing any addictions issues, learning new life skills and addressing involvement in the criminal justice system.



### CASE MANAGEMENT

The TYES Support Services provided by Fernie Youth Services will adopt a Case Management model that is the coordination of community-based services to provide young people with the quality supports that are customized according to an individual's setbacks or challenges.

Case Managers will develop partnerships with City services and community-based organizations that can support the needs of the client. The Case Managers seek to reduce recidivism and support individuals through a holistic approach that considers each person's overall needs.

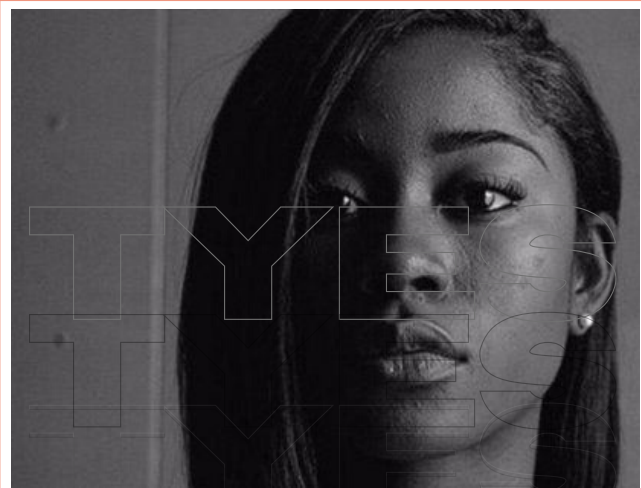


## SERVICE REQUIREMENTS

This program will support Young Adults (YA) 18 to 29 on Probation and/or Parole that have a firearm conviction and/or have been identified as being involved in gang activity.



**"WE TREAT OUR CLIENTS IN WAYS THAT RESPECT THEIR DIGNITY AND INDEPENDENCE."**



TYES